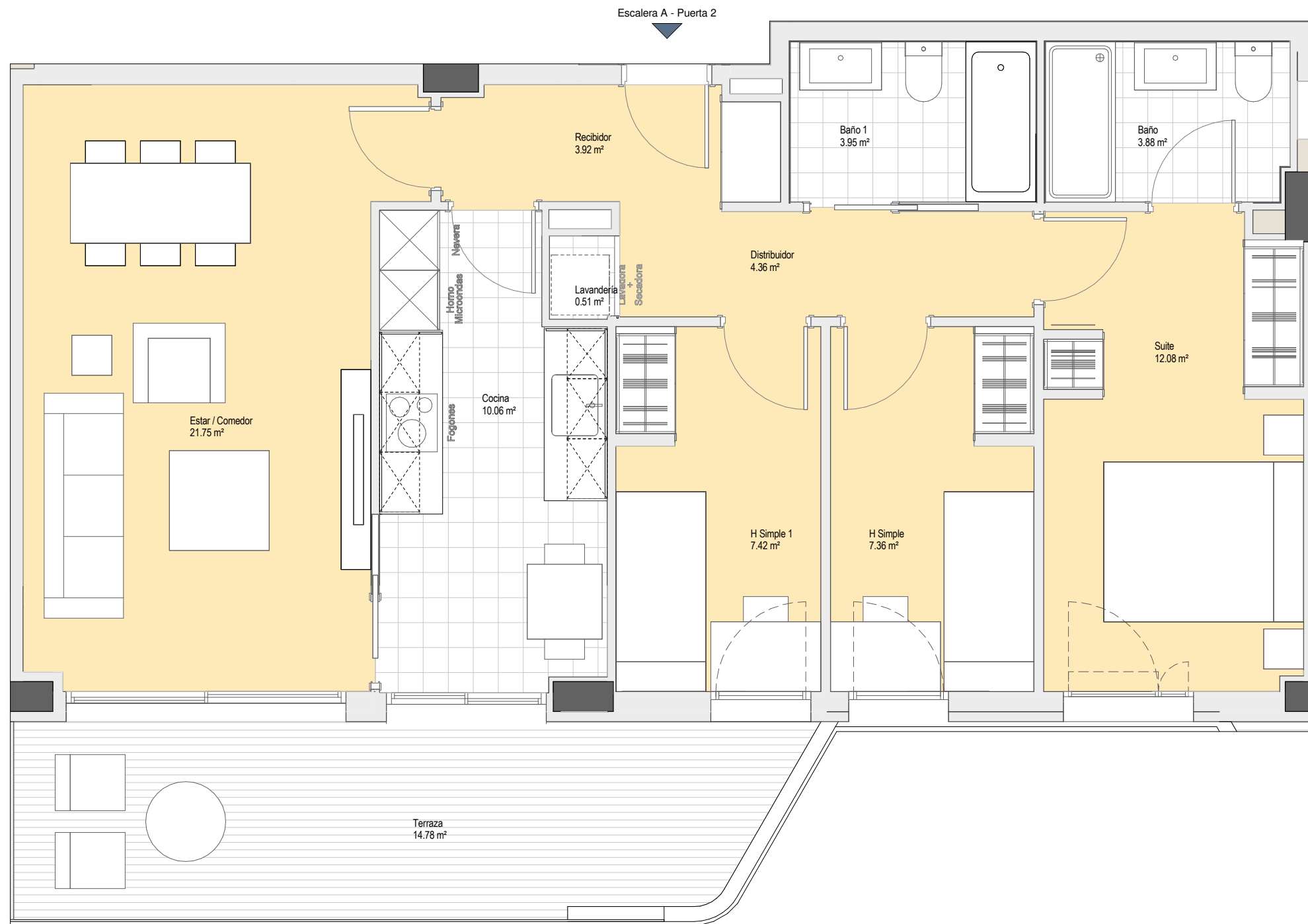
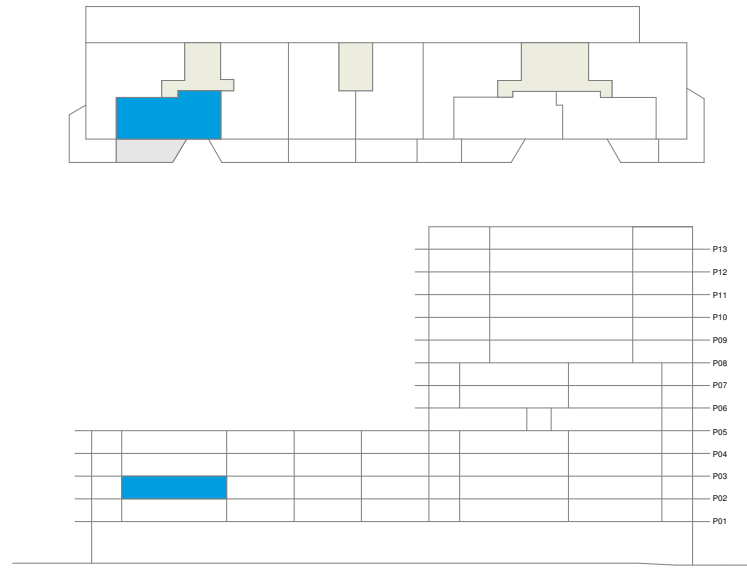
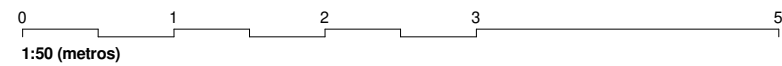


ESPACIO	SUP. ÚTIL	SUP CONST.
Lavandería	0.51 m <sup>2</sup>	
Baño	3.88 m <sup>2</sup>	
Recibidor	3.92 m <sup>2</sup>	
Baño 1	3.95 m <sup>2</sup>	
Distribuidor	4.36 m <sup>2</sup>	
H Simple	7.36 m <sup>2</sup>	
H Simple 1	7.42 m <sup>2</sup>	
Cocina	10.06 m <sup>2</sup>	
Suite	12.08 m <sup>2</sup>	
Estar / Comedor	21.75 m <sup>2</sup>	
Total Superficies	75.29 m <sup>2</sup>	86.90 m <sup>2</sup>
Terraza	14.78 m <sup>2</sup>	15.38 m <sup>2</sup>



Escalera A - Puerta 2



Vivienda Tipo 3D02  
1:50 (A3)